

SDS Series IVI Specific Driver Installation Guide

Running Environment

- ♦ Operating System: Windows 7 or higher
- ♦ IVI Compliance Package 15.0 or higher

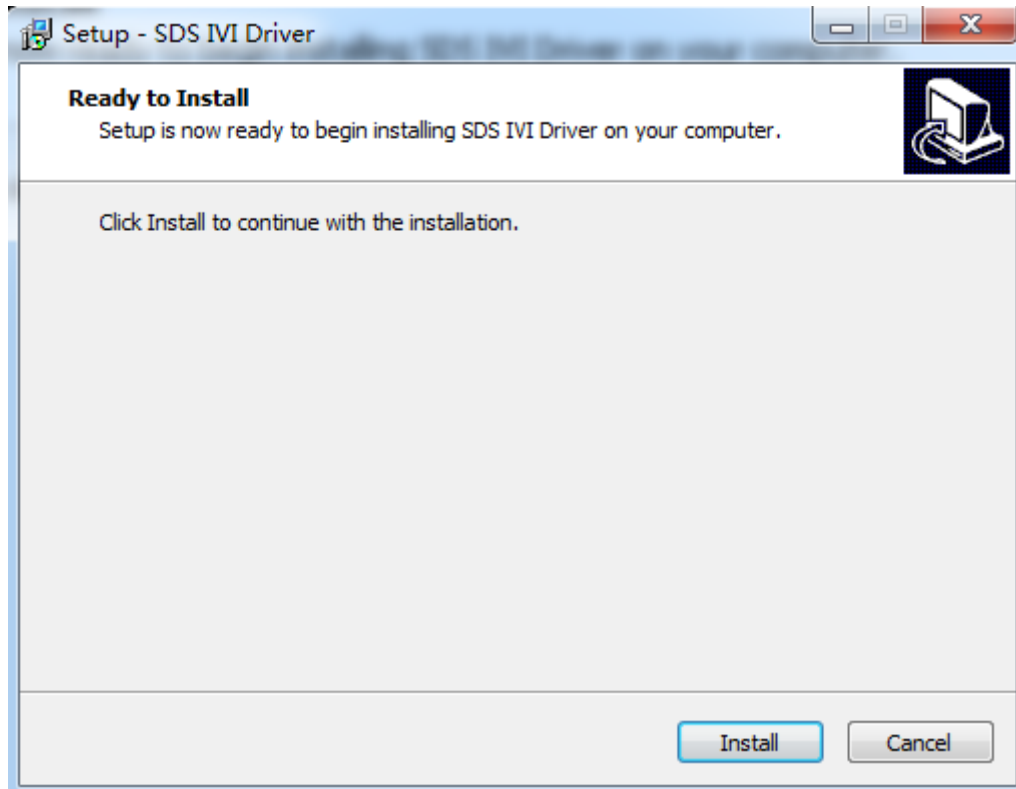
Install IVI Compliance Package

Before installing the IVI Specific Driver, please make sure that your PC has installed the IVI Compliance Package. You can get the IVI Compliance Package self-extracting archive from <https://www.ni.com/en-us/support/downloads.html> by navigating through the Drivers link. (For example, you can get IVI compliance package 15.0 from:

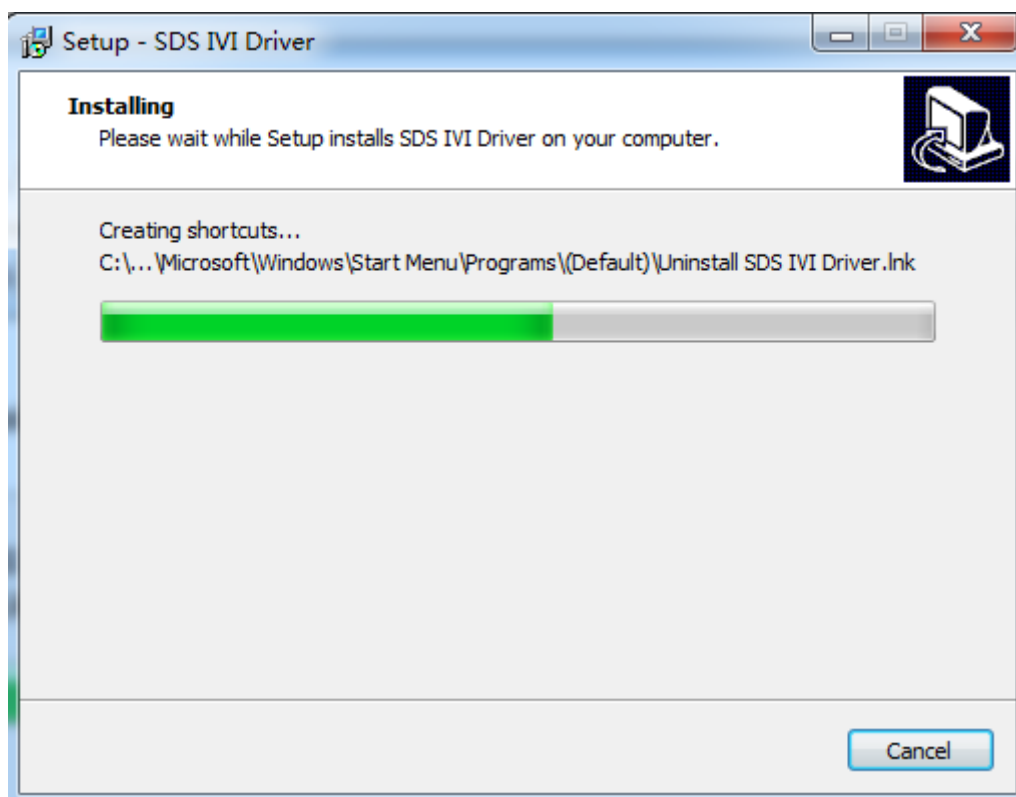
<https://www.ni.com/en-us/support/downloads/drivers/download.ivi-compliance-package.html#346218>)

SDS Series IVI Specific Driver Installation

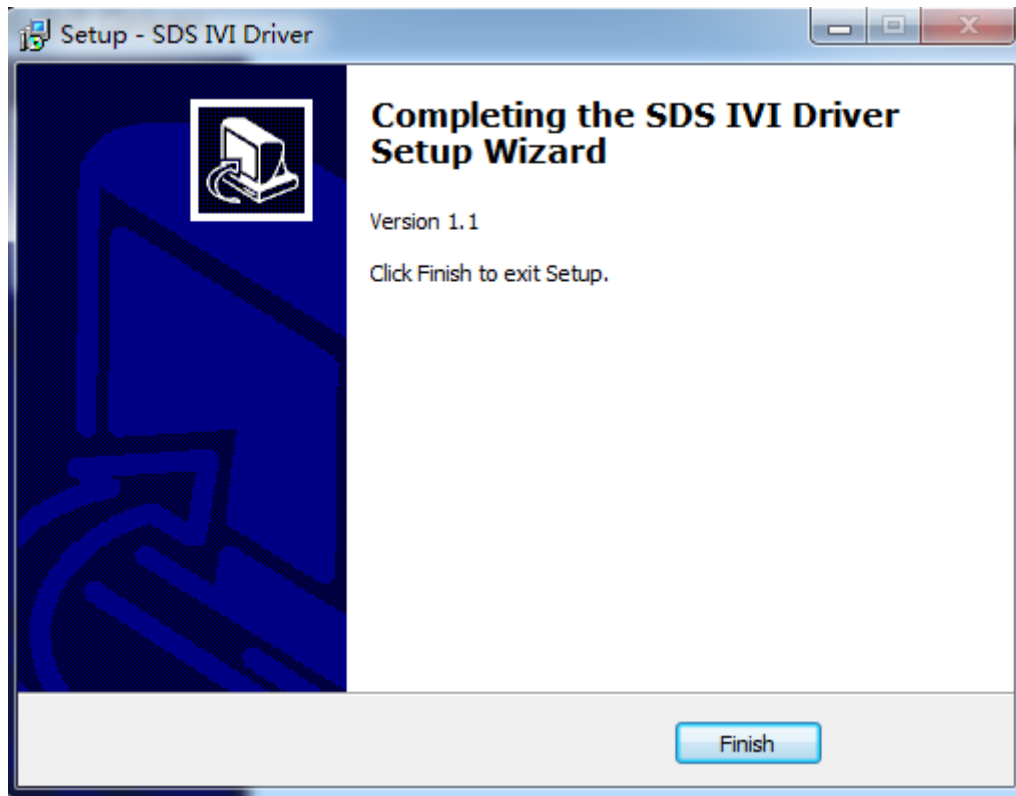
- 1). Double click the installation package setup.exe. A dialog box will appear as shown below.



- 2). Click Install, and wait for the installation process to complete.



- 3). Installation completes with a message as shown:



- 4). After the installation, you will find some files located at: "C:/Program Files/IVI Foundation/IVI/" and "C:/Program Files(x86)/IVI Foundation/IVI". The dynamic link library is located in ./Bin, the header file is located in ./Include, the library is located in ./Lib/msc and other files are located in ./Drivers.

Note: We suggest using the dynamic link library. Please make sure you are using the correct path name.